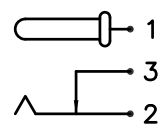
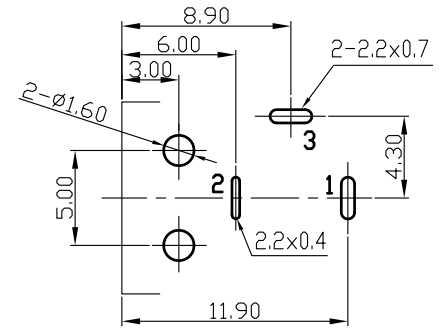
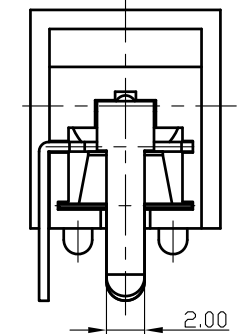
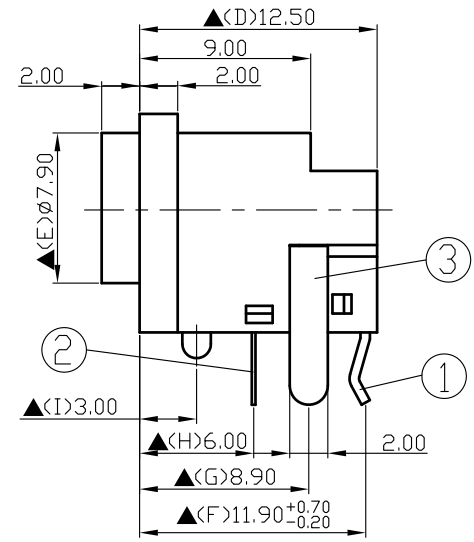
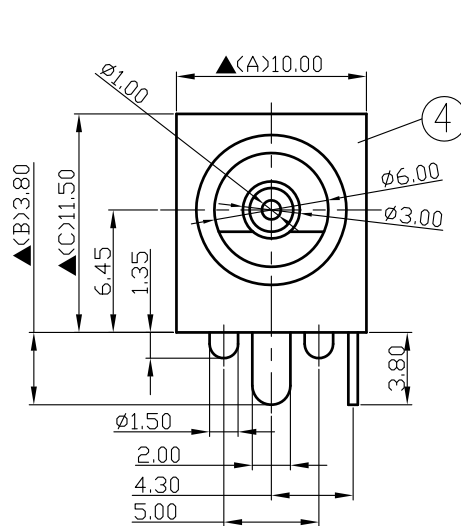



SCHMATIC	
MODEL NO	C




Pin Hole Layout
(Jack Bottom View)

4.	Housing	PBT+15%	1	Black Color
3.	Break Terminal	0.5T Brass	1	Silver Plated
2.	Ring Spring	0.2T Phosphor Bronze	1	Silver Plated
1.	Pin Terminal	0.5T Brass	1	Silver Plated
NO.	Description	Material	Q'TY	Finish

 S.C. PRECISION INDUSTRIAL CO., LTD.	DATE	DWN	CHKD	APVD	MANAGER
	10.07.2021	王平華			

PART NAME: DC POWER JACK	PART NUMBER: SCD460ECS000B00G	VERSION: 6.0
--------------------------	-------------------------------	--------------

TOLERANCE: $\pm 0.3\text{mm}$ UNLESS OTHERWISE SPECIFIED	UNIT: mm 	SCALE: 1/1
--	--	------------

For Redference
僅供參考

RoHS&SVHC
Compliant

SPECIFICATIONS:
 Contact Resistance : $30\text{m}\Omega$ max
 Current Rating : Max 5.0A ,24VDC
 Insulation Resistance : $100\text{M}\Omega$ min.at DC500V
 Dielectric Withstand Voltage : AC 500V for one minute
 Remark: \blacktriangle : The Most Important Dimension